

MEDICAL MICROBIOLOGY

LAB 8

Staphylococcus (Gram positive cocci)

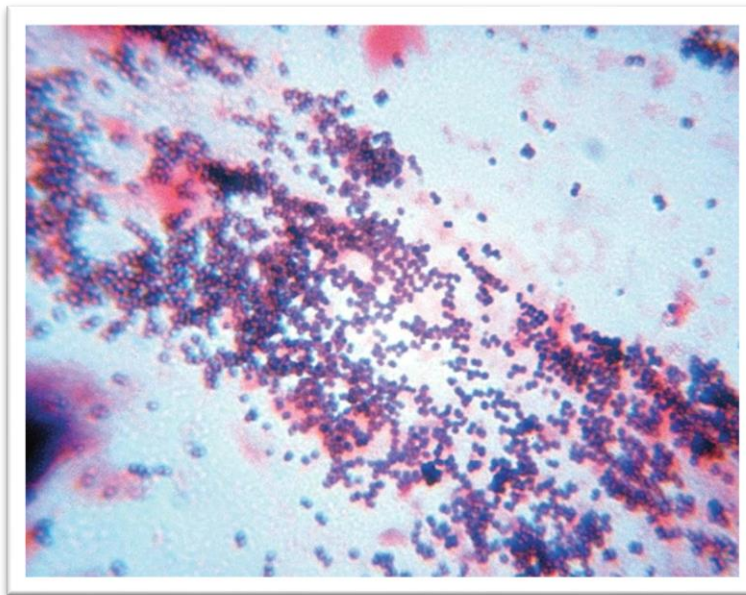


Dr. Sarwa Azeez Khalid

Assis. Lec . Shahad Muaad Tawfeeq

Staphylococcus

Staphylococci are gram positive spherical bacteria that divide in more than one plane to form irregular clusters of cells . The staphylococci are non-motile, non-spore-forming, and able to grow in media containing high salt concentrations . Most are considered facultative anaerobes.



Gram stain of *Staphylococcus aureus*

S. aureus ferments mannitol to produce acid. This metabolic characteristic can be observed when cultures of *S. aureus* are grown on mannitol salt agar (MSA) . The production of acid lowers the pH of the medium , causing the phenol red indicator to turn from red to yellow .



(a)



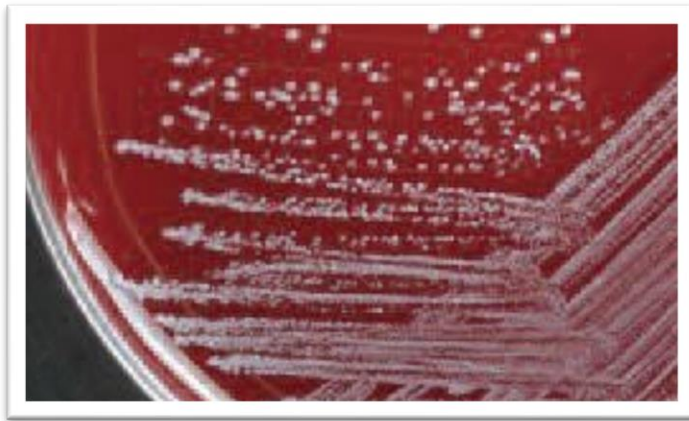
(b)

Staphylococcus epidermidis (a) and *Staphylococcus aureus* (b) growing on a **mannitol salt agar plate**. Note the color change that occurs due to acid production from the fermentation of mannitol by *S. aureus*.

Differentiation of Three Species of Staphylococci

	<i>S.aureus</i>	<i>S.epidermidis</i>	<i>S.saprophyticus</i>
Alpha toxin	+	—	—
Mannitol fermentation	+	—	(+)
Coagulase	+	—	—
Dnase	+	—	—
Novobiocin	S	S	R

Note : S = Sensitive , R = Resistant , + = positive , (+)
= Mostly positive



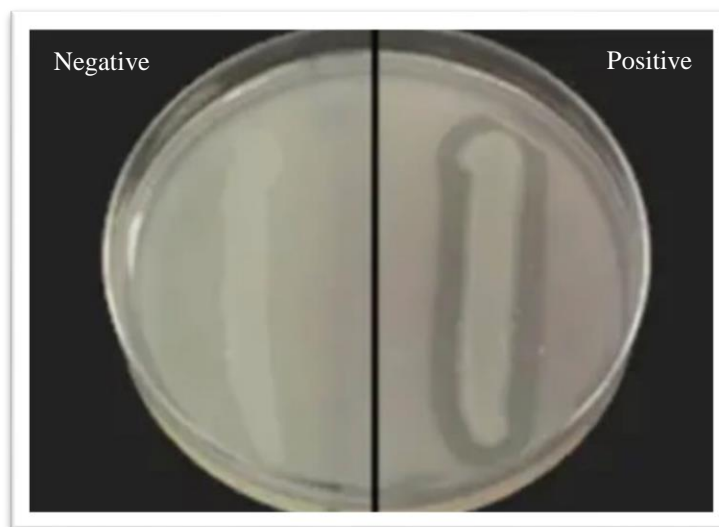
***Staphylococcus epidermidis* grown on sheep blood agar**
The colonies are white, raised, circular (no hemolysis)



***Staphylococcus aureus* on sheep blood agar**
Note : the-hemolysis

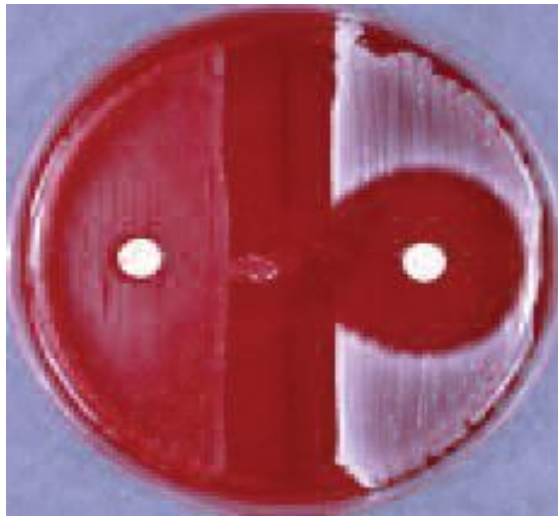


Coagulase test: Positive test with negative test. The Coagulase Test is typically used to differentiate *Staphylococcus aureus* from other Gram-positive cocci.



DNase test negative and positive after adding HCL

DNase Test Agar is used to distinguish *Staphylococcus aureus* (+) from other *Staphylococcus* species



NOVOBIOCIN DISK TEST *Staphylococcus saprophyticus* (R)
is on the left; *Staphylococcus epidermidis* (S) is on the right

